

## Test report

Product model: MGL-V-532

Product power:>10W

Product number: GA11919

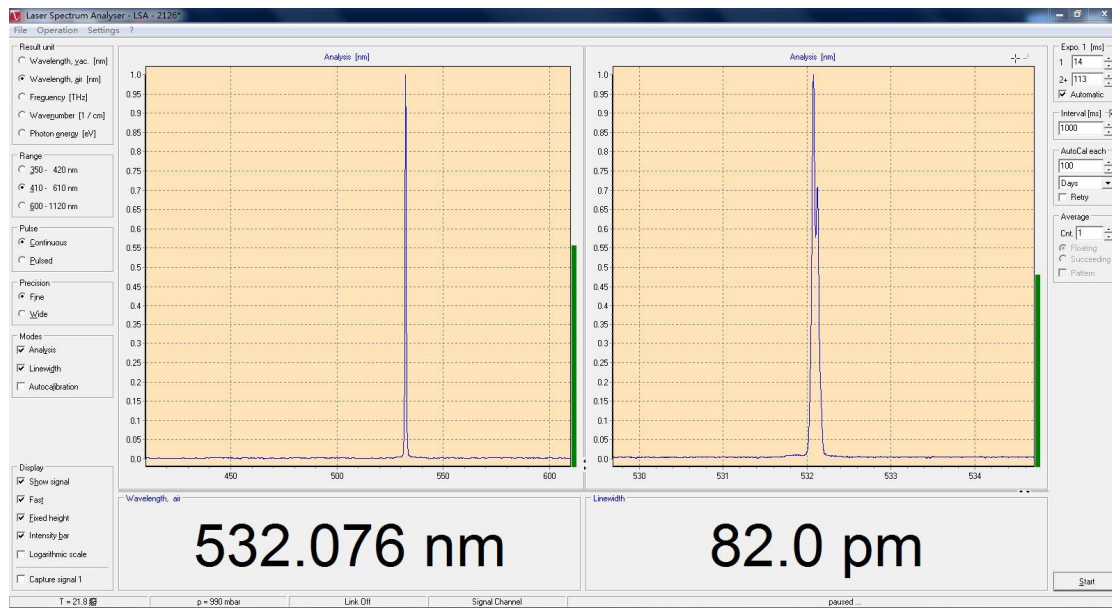
Test report

Test items	Data	Note
Central wavelength	532.076nm/82.0pm	Figure 1
Output power	10.94W	Figure 2
Output power stability	0.689%	Figure 2
Transverse mode mode	TEM <sub>00</sub>	Figure 3
Beam diameter (1/e <sup>2</sup> )	X:1.426mm Y:1.289mm	Figure 3
Beam divergence angle (full angle)	~1.0mrad	/
M2	X:1.07/Y:1.09	Figure 4
Horizontal polarization ratio (mW)	~10500:87(PBS 测试)	/
P-I/P-V	/	Figure 5
Threshold current	1.54A	/
Operation mode	CW	/
Cooling method	风冷	/
Warm-up time	<10mins	/
Power consumption	210W@25℃	/
Light output height	80mm	Figure 6
Laser head size	335×140×110mm <sup>3</sup>	Figure 6
Laser head weight	6.26kg	/
Power supply	100-240VAC	Figure 7
Power supply model	PSU-W-LED	Figure 7
Power supply size	301.5×185×114mm <sup>3</sup>	Figure 7
Power supply weight	3.0kg	The power supply value is current, unit A
Power supply mode	/	/
Modulation	TTL/模拟	Figure 1

Tester: T02

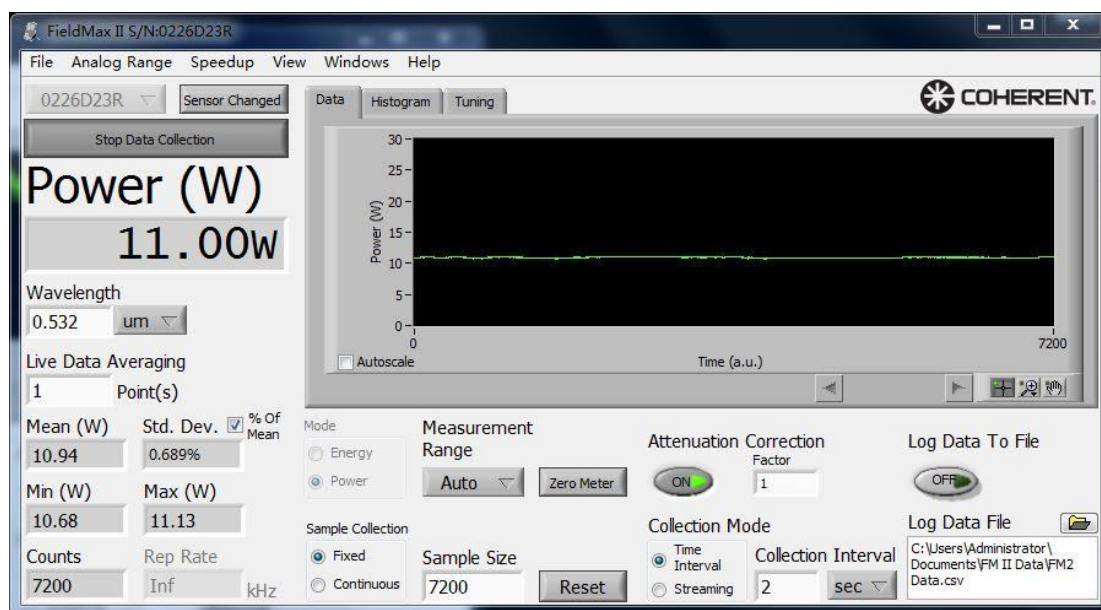
Testing time: 2025-2-19

Figure 1. Central wavelength



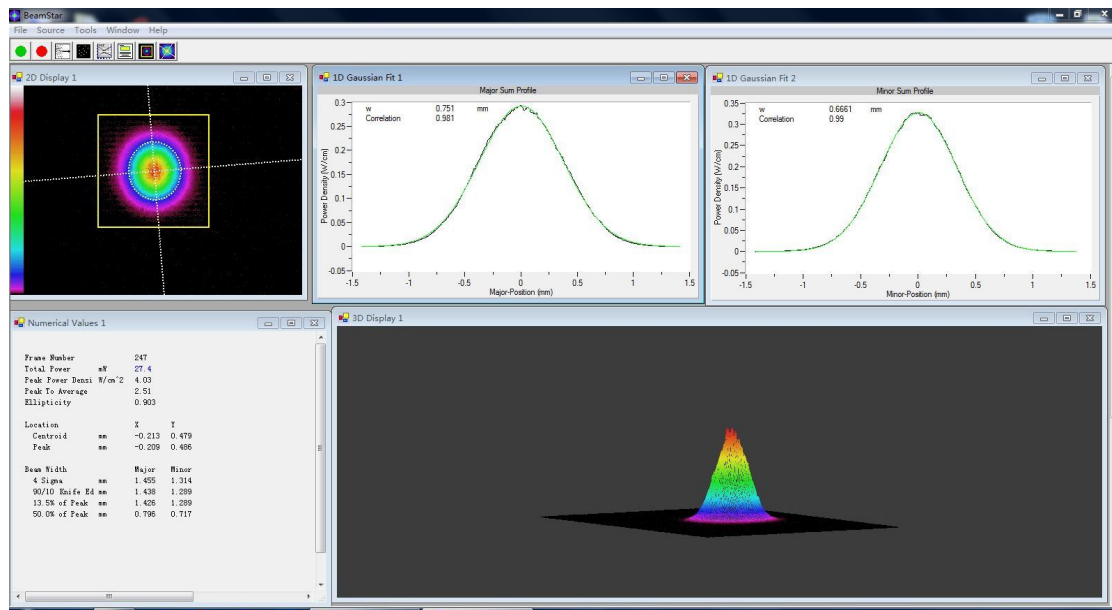
Spectrometer (HR4000 CG-UV-NIR) detection

Figure 2. Output power and power stability detection



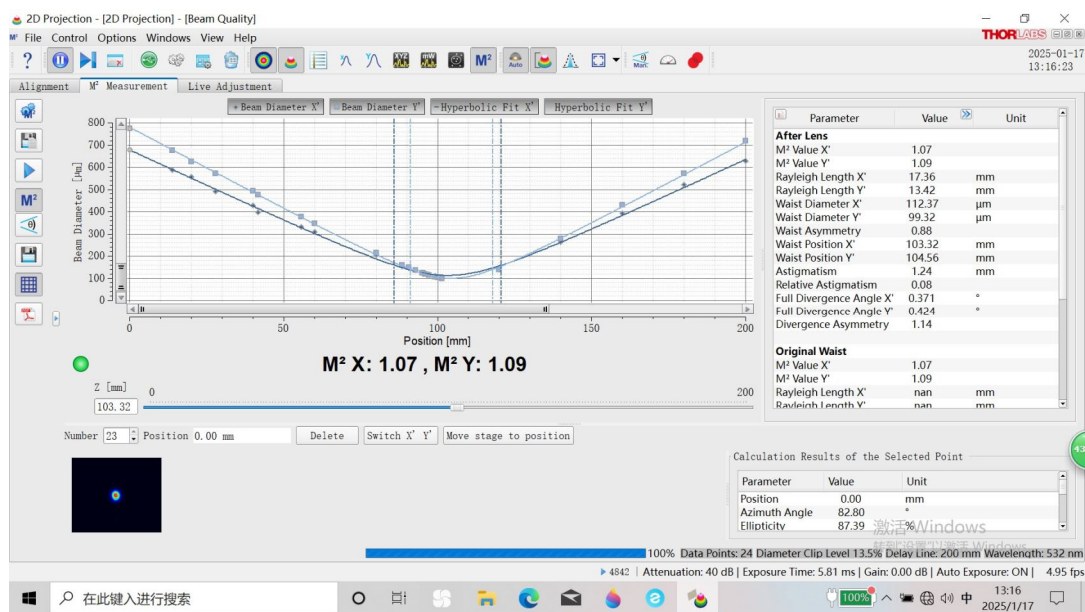
Coherent (PM30) power meter monitors power and power stability

Figure 3. Beam profile detection



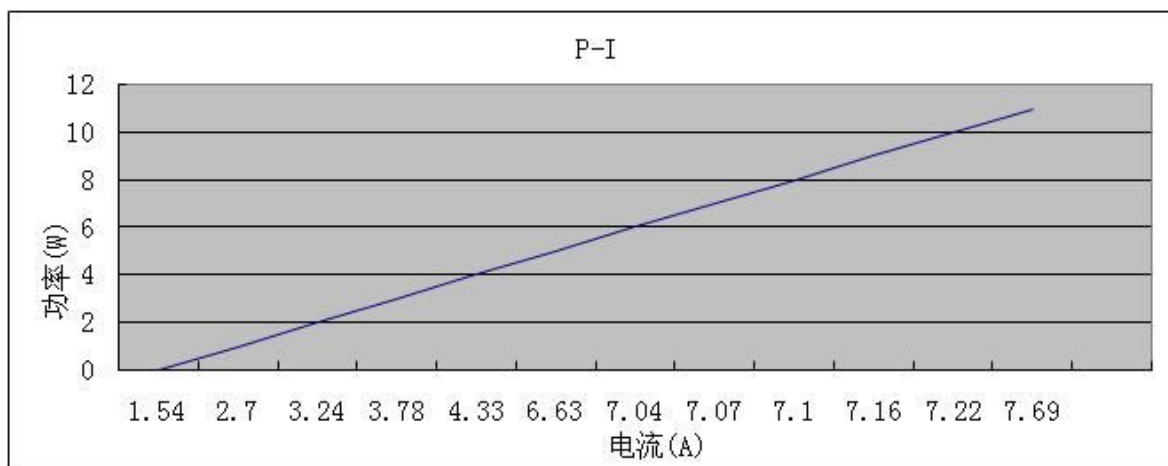
CCD (BGS-USB-SP620) camera detects beam profile

Figure 4.  $M^2$



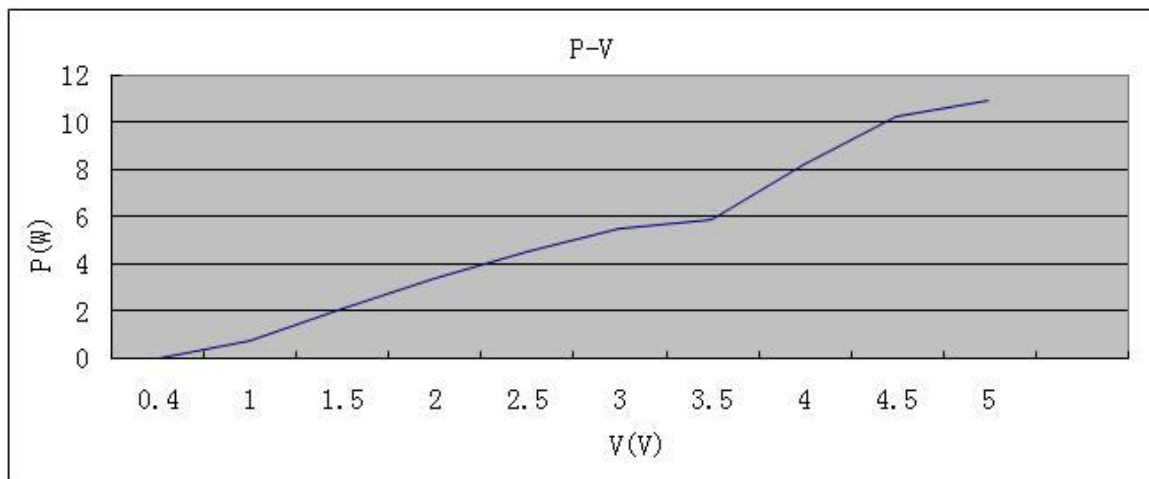
$M^2$  tester (LSA-Series) detection

Figure 5. P-I



Power(W)	0	1.0	2.0	3.0	4.0	5.0	6.0	7.0	8.0	9.0	10	10.94
Current(A)	1.54	2.7	3.24	3.78	4.33	6.63	7.04	7.07	7.1	7.16	7.22	7.69
%	104	231	310	394	474	675	746	789	834	880	930	1000

P-V



Power (W)	0	0.76	2.11	3.39	4.57	5.5	5.87	8.23	10.28	10.96
V(V)	0.4	1.0	1.5	2.0	2.5	3.0	3.5	4.0	4.5	5.0

Figure 6. Laser head

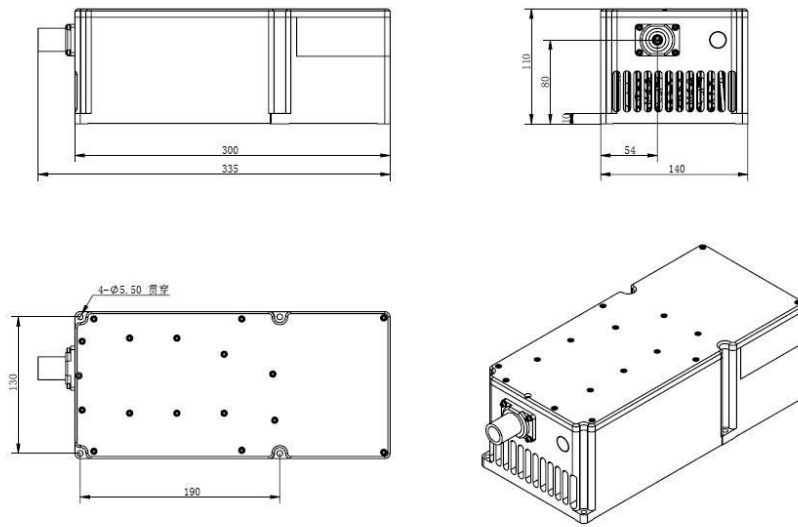


Figure 7. Power supply

